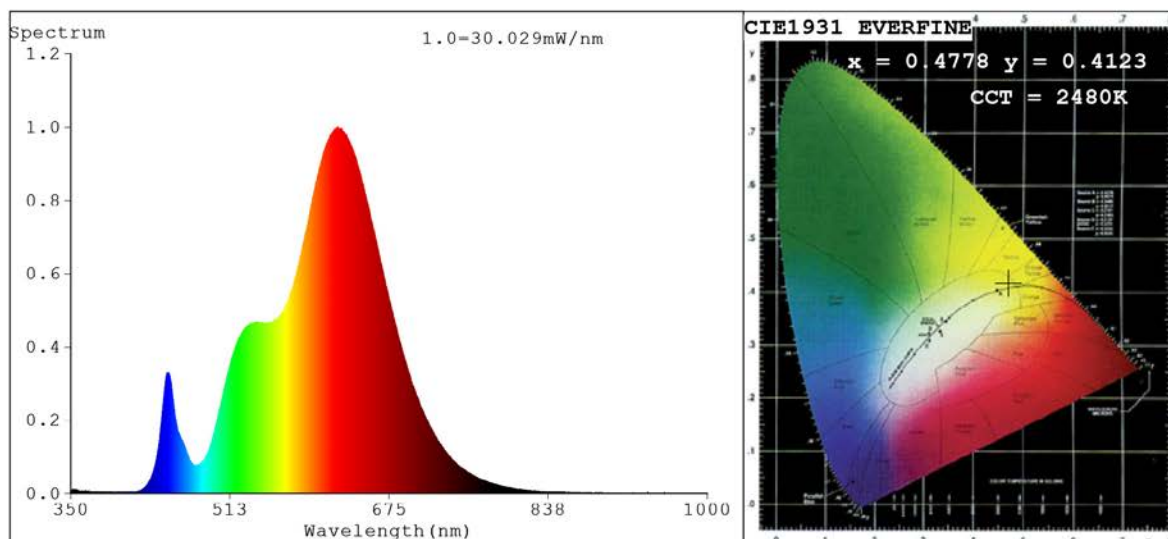


Spectrum Test Report



Color Parameters:

Chromaticity Coordinate: $x=0.4778$ $y=0.4123$ $u'=0.2733$ $v'=0.5307$
 CCT=2480K (Duv=-0.0005) Dominant WL:Ld =585.6nm Purity=67.2%
 Ratio:R=29.4% G=69.0% B=1.6%;;Peak WL:Lp=622.7nm FWHM=110.4nm
 Render Index:Ra=95.0 CRI=92.3 TM30:Rf=89 Rg=103
 R1 =99 R2 =98 R3 =95 R4 =95 R5 =98 R6 =97 R7 =93
 R8 =85 R9 =65 R10=93 R11=90 R12=89 R13=99 R14=96 R15=92

Photo Parameters:

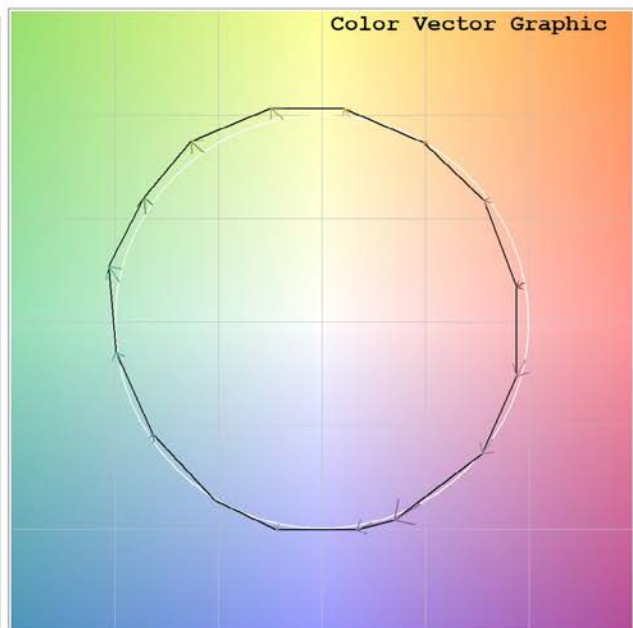
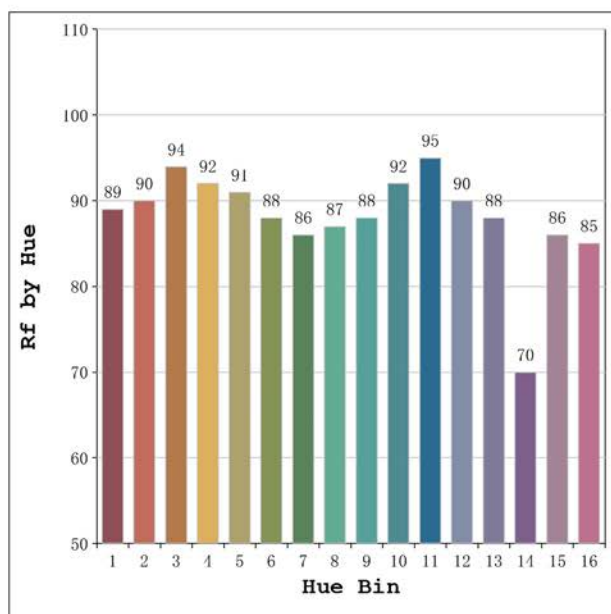
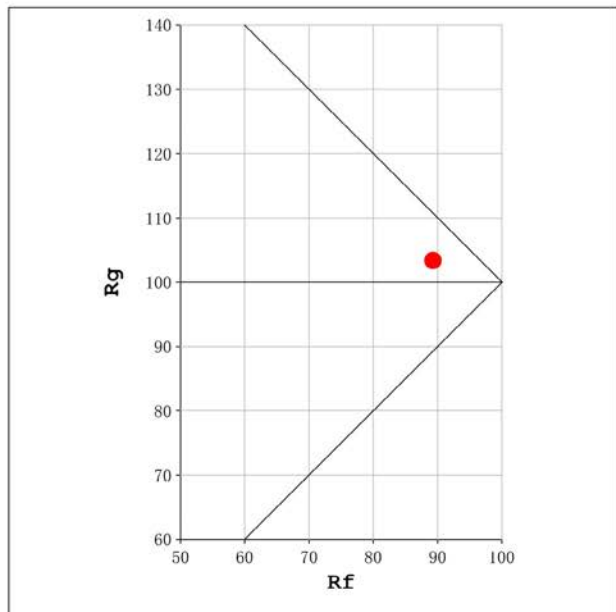
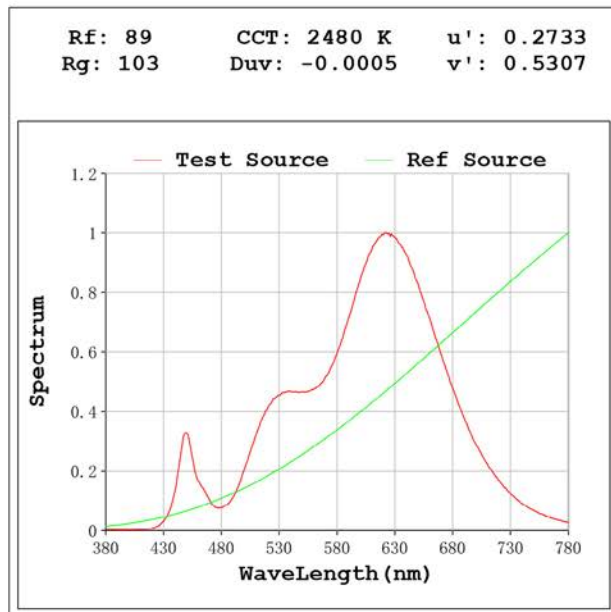
Flux = 1204 lm Eff. : 80.48 lm/W Fe = 4.330 W

Electrical parameters:

V = 23.998 V I = 0.6236 A P = 14.97 W PF = 1.000

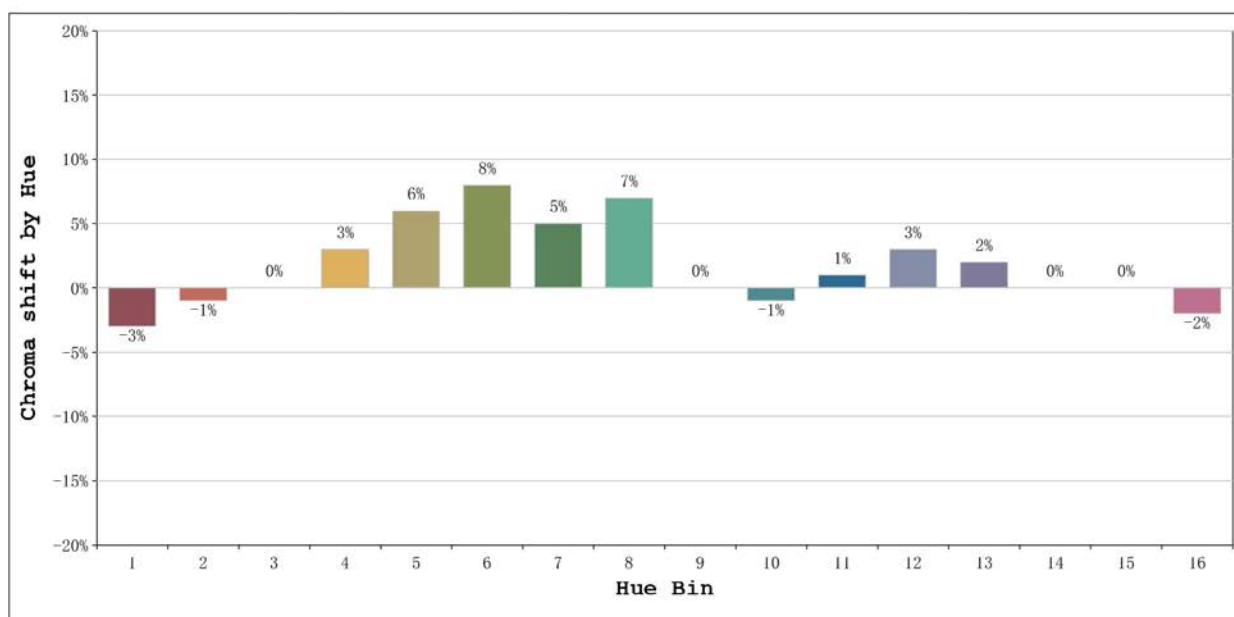
Status: Integral T = 1000 ms Ip = 54953 (84%)

Model:Ecoled Élite 15 Gold 2400	Number: 31.171
Tester:Sergio Carneros	Date:2025-02-12 14:53:31
Temperature:20Deg	Humidity:50%
Manufacturer:Luz Negra	Remarks:100cm de tira flexible



Model:Ecoled Élite 15 Gold 2400
 Tester:Sergio Carneros
 Temperature:20Deg
 Manufacturer:Luz Negra

Number: 31.171
 Date:2025-02-12 14:53:31
 Humidity:50%
 Remarks:100cm de tira flexible



			Graphic shift(%)	
Hue Bin	Hue Angle	Rf	Chroma	Hue
1	0.0° - 22.5°	89	-3	0
2	22.5° - 45.0°	90	-1	3
3	45.0° - 67.5°	94	0	2
4	67.5° - 90.0°	92	3	4
5	90.0° - 112.5°	91	6	5
6	112.5° - 135.0°	88	8	2
7	135.0° - 157.5°	86	5	-5
8	157.5° - 180.0°	87	7	-6
9	180.0° - 202.5°	88	0	-5
10	202.5° - 225.0°	92	-1	-3
11	225.0° - 247.5°	95	1	0
12	247.5° - 270.0°	90	3	0
13	270.0° - 292.5°	88	2	-7
14	292.5° - 315.0°	70	0	-14
15	315.0° - 337.5°	86	0	-7
16	337.5° - 360.0°	85	-2	-7

Model:Ecoled Élite 15 Gold 2400 Number: 31.171
 Tester:Sergio Carneros Date:2025-02-12 14:53:31
 Temperature:20Deg Humidity:50%
 Manufacturer:Luz Negra Remarks:100cm de tira flexible